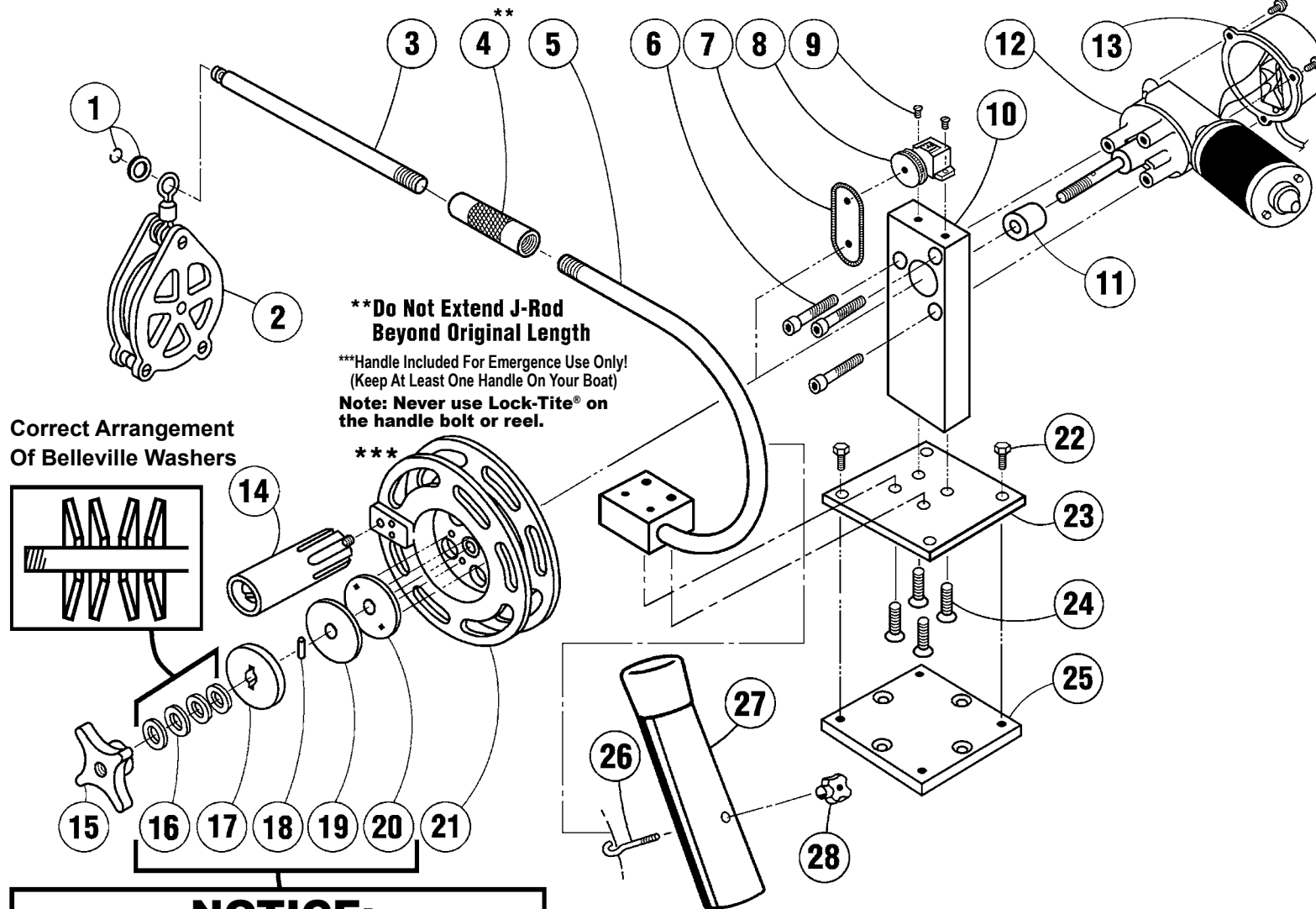


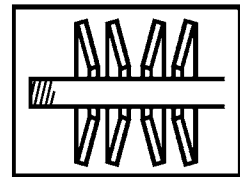


# Sportsman Electric Downrigger



**\*\*Do Not Extend J-Rod Beyond Original Length**  
 \*\*\*Handle Included For Emergence Use Only!  
 (Keep At Least One Handle On Your Boat)  
**Note: Never use Lock-Tite® on the handle bolt or reel.**

Correct Arrangement Of Belleville Washers



**NOTICE:**  
 This Improved Clutch System Replaces All Clutch Systems (With Disk And Clutch Plugs) Built Before April, 2013

## Parts List ED02012L

Detail No.	Description	Qty.	Order By Part No.	Qty. In Kit (KT)
1	Tip Retainer Ring & Aluminum Tip Retainer	1	KT51043	1 per kit
2	5 Spoke Tip Assembly	1	KT3049*	1 per kit
3	10-1/2 in. End Rods	1	51123	
4	Rod Collars	1	51044	
5	5/8 in. Dia. J-Rod w/ Block	1	2012JROD/ASM	
6	1/4-28 x 1-1/2 in. SH Cap Screws	3	2007	
7	Large Counter Spring	1	2283	
8	LH Counter w/ Med. Wheel	1	FC600JR86	
9	Counter Screws	2	2014	
10	Jr. Upright	1	51014	
11	Hardened Spacer	1	51059	
12	Motor Assembly	1	KT2205	1 per kit
13	Switch Box Assembly	1	51145ASM	
14	Handle w/ Bolt & Sleeve**	1	KTHA101	1 per kit
15	Jr. Clutch Knob	1	KT51153	2 per kit
16	Jr. Belleville Washers	4	KT2232	4 per kit
17	Outer Clutch Disk	1	KT51094	1 per kit
18	Shaft Dowel Pin	1	2163	
19	Graphite Pad	1	KT2308	1 per kit
20	Inner Clutch Disk	1	KT51098	1 per kit
21	6 in. Reel	1	KT51184	1 per kit
22	1/4-20 x 3/4 in. SS Bolts	4	2017	
23	Universal Base Plate	1	51002	
24	1/4-20 x 3/4 in. Flat Head Screws	4	2009	
25	8 Hole Mounting Plate	1	51001	
26	Mounting Hook	1	2501	
27	Rod Holder & Cap	1	51045	
28	Mounting Knob	1	51172	

RH00409

